



# BEAUFORT GREEN



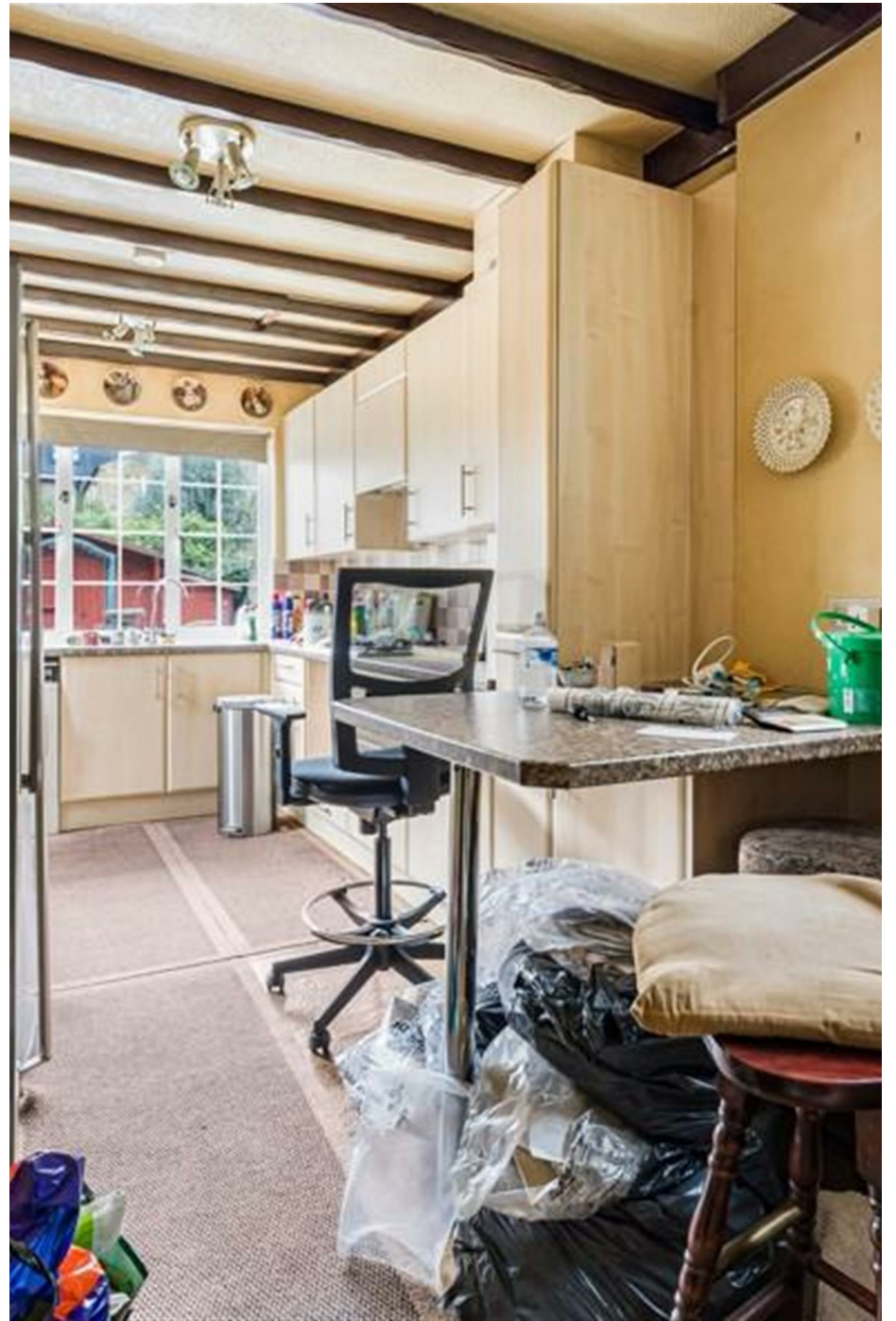
Inglethorpe Street, SW6

£1,350,000



This spacious four-bedroom, two-bathroom house currently configured as two separate flats. Sitting in on the desirable Alphabet streets and offering considerable and flexible space over 1,600 square feet. Full of period charm as well as a generous garden. A wonderful opportunity in a sought-after location.



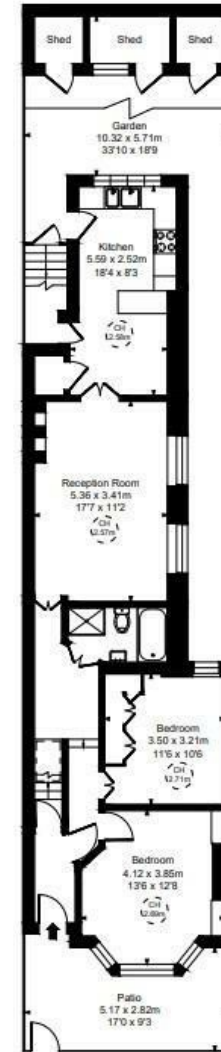


# BEAUFORT GREEN

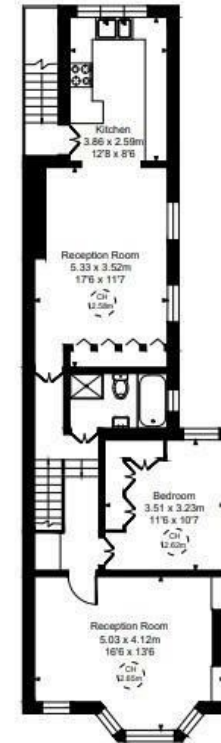


# BEAUFORT GREEN

Inglethorpe Street, SW6  
Approximate Gross Internal Area  
153.87 sq m / 1654 sq ft  
(CH = Ceiling Heights)



Ground Floor



First Floor

At a Glance.

The plan is for guidance only and is not for construction purposes.  
All measurements and areas are approximate only and have been prepared in accordance with the current edition of the RICS Code of Measuring Practice.

# BEAUFORT GREEN

02074594100

[charlie@beaufortgreen.co.uk](mailto:charlie@beaufortgreen.co.uk)

---

263 New Kings Road  
London  
SW16 1DB